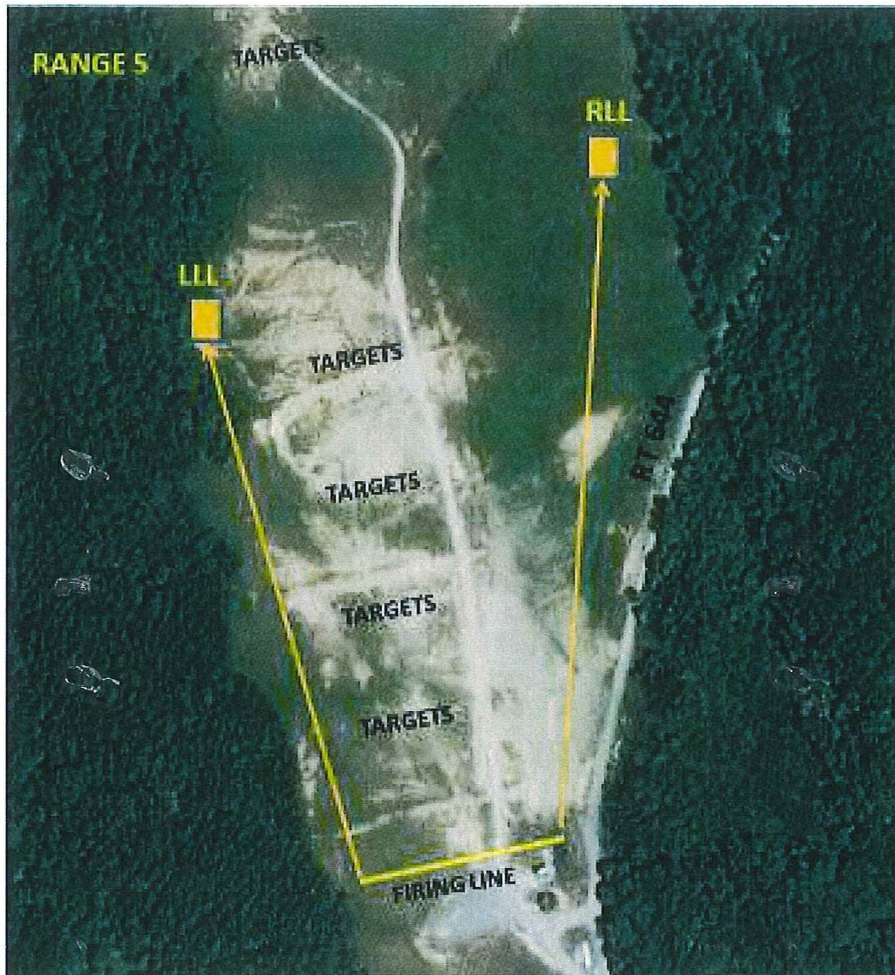


RANGE 5

SOP

RANGE DESCRIPTION

Range 5 is an active; small arms fire and movement range located at Grid 18STH8150065400. It is accessible from Route 610 and Rt644.



INFORMATION

Description: Fire and movement 0-400m
Status: Active
Location: 81506540
Number of Firing Points: Approximately 20

RANGE USES

Primary Use: Fire and movement range for squad-sized units.
Alternate Uses: Static multipurpose small arms.

WEAPONS ACCOMMODATED

-Pistol
-Shotgun
-40mm grenade launcher, handheld

- Grenades (practice/illumination)
- Service Rifle
- Light and Medium Machine Guns
- M40A3/A5
- Approved foreign weapons up to 7.62X54R
- Automatic Rifles
- AT-4/LAAW (Trainer)
- SMAW Spotting Rifle
- 60mm Mortar

AMMUNITION AUTHORIZED

- Shotgun (All)
- Pistol (All)
- 5.56mm (All)
- 7.62mm X 51mm Ball
- 7.62mm X 51mm Special Ball (.308)
- Approved foreign ammunition up to 7.62 X 54R
- 40mm (illum/prac/smoke)
- 1/4 lbs TNT/artillery simulators
- Grenade Prac/Illum
- AT-4/LAAW Trainer Rounds
- SMAW Spotting Round
- 60mm Mortar (Illum, practice)
- Pyrotechnics

TARGETS/SIMULATORS/DEVICES

- 41 Stationary Infantry Target Systems (SITS) with SACON protective walls.
- 3 Stationary Infantry Target Systems (SITS) inside SACON bunkers.
- 3 Moving Infantry Target Systems (MITS) with SACON protective walls.
- **SITS and MITS are programmable automated target systems.
- Users can also provide their own APPROVED targets.
- Targets are limited to paper, wood, plastic and approved ballistic steel.
- Approved ballistic steel targets cannot be placed adjacent to, or within 20 feet of the existing RETS targets (See steel target placement diagram in this certification and Range 5 SOP).
- Ballistic steel targets must be a minimum thickness of 3/8" and constructed of AR-500 or greater steel.
- Steel targets will not be engaged closer than 100m with 5.56mm or 7.62mm for targets provided by unit.
- No EPR ammunition will be fired on steel targets.**
- Contact Training Support Center (TSC) at (703)432-7026/7969 for targetry support or questions.

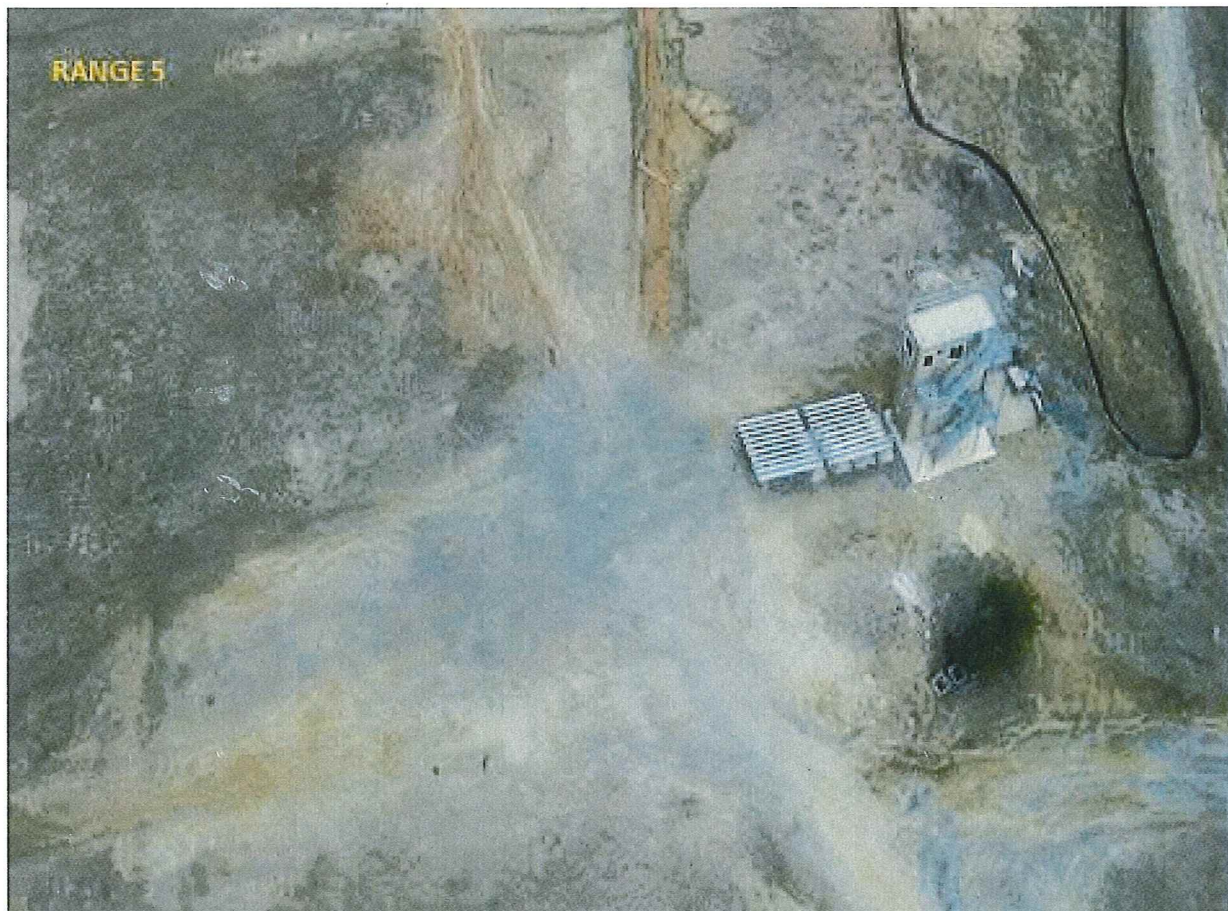
Minimum engagement distances for portable ballistic steel targets:

- Pistol: 7 meters
- Shotgun (buck/bird): 10 meters
- Shotgun (slug): 50 meters
- 5.56mm/.223 Ball/link: 150 meters for TSC targets
100 meters for unit-owned targets
- 7.62mm Ball/link: 150 meters for TSC targets

100 meters for unit-owned targets
-7.62mm Special Ball: 150 meters
-.300 WinMag Ball: 300 meters
-.338 LaPua Magnum: 300 yards

-Approved foreign weapons ammunition

-Pistol: 7 meters
-5.45mm: 150 meters for TSC targets
100 meters for unit-owned targets
-7.62mm Ball and linked: 150 meters for TSC targets
100 meters for unit-owned targets
-7.62mm x 54R: 150 meters for TSC targets
100 meters for unit-owned targets



RANGE 5 BUNKER TARGETS



RANGE 5 STATIONARY INFANTRY TARGETS (SITS)



RANGE 5 MOVERS



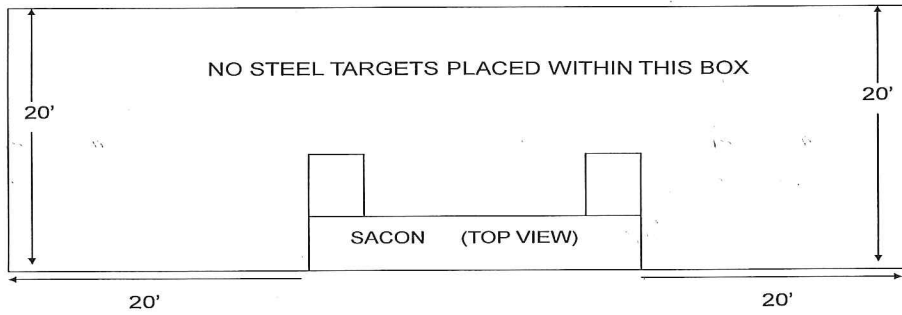
RANGE 5 BUNKERS AND SITS TARGETS



RANGE 5 TOWER



STEEL TARGET PLACEMENT



PRIMARY DIRECTION OF FIRE. North

RANGE USE RESTRICTIONS/COMMENTS

1. Only weapons and ammunition listed in this document will be used on this range.
2. OIC and RSO must be present while live fire is in progress.
3. All brass, trash, targetry and materials will be removed completely at the end of training by the using unit. This includes any materials used to place targets on.
4. Ensure range flags are posted, ear protection is worn (eye protection for steel), safety brief is given, Range Control contacted and all fires are directed between the left and right lateral limits markers (black and white striped).
5. Fire and maneuver is not authorized. Fire and movement (rushes) is authorized.
6. Multiple demolition beds are in place to simulate incoming fire when conducting fire and movement.
 - Only qualified engineers or EOD personnel will operate explosives or artillery simulators on this range.
 - Units must remove metal caps from the ends of the 1/4 lb TNT in order to minimize damage to sand bags.
 - Units must clean all debris from demo pits as well as refill and rake sand flat before and after training.
 - Artillery simulators may be used to substitute for 1/4 lb TNT.
 - Personnel moving downrange MUST remain 1 meter away from the edge of the demo pits.
 - If there is a dud in a pit, no other explosives will be used/thrown into that pit until cleared. Personnel will stand clear of the pit until cleared by appropriate personnel.
 - Simulators and explosives WILL NOT be used outside of the demo pits.
7. Hazards of Electromagnetic Radiation to Ordnance (HERO) sensitive munitions are commonly used on this range. It is the Range Officer in Charge/Range Safety Officer (ROIC/RSO) responsibility to understand all capabilities and limitations of their munitions.
8. Steel targets are authorized if placed in accordance with the steel target placement diagram in this range SOP. Steel targets will not be placed where bullet splash will come in contact with automated target systems. **Steel targets will not be engaged with 5.56 or 7.62 closer than 100 meters.**
9. Targets are limited to wood, paper, plastic, approved steel and the automated targets. No other targets will be used such as bowling pins, clay targets, cans, etc. **No targets will be placed where the SACON protective walls become backstops.**

10. 60mm mortars are authorized (training and illumination only). Training mortars will not be handled by the training unit. EOD is the only unit authorized to supervise the removal of TP mortars.

11. Mortars will not be fired over the heads of unprotected troops.

12. Units that do not occupy their range within two hours of their scheduled occupy time will lose the use of that range for that day.

13. Units that have requested contractor support (i.e., automated targets, PITS targets, battlefield effects simulators, etc.) that are not present on the specified range within 1 hour of the requested time and have not contacted RMB/TSCQ will forfeit all contracted support for the day.

14. Units that have occupied a range with approved contractor support (i.e., automated targets, PITS targets, battlefield effects simulators, etc.) and that have not begun to use that support within 2 hours of the requested hour of operation will forfeit all contracted support for the day.

15. Units that are training with contractor support (i.e., automated targets, PITS targets, battlefield effects simulators, etc.) that place themselves voluntarily into check fire for 2 hours during the approved support operational hours will forfeit all support for the day.

16. Units that encounter situations where contractor support (i.e., automated targets, PITS targets, battlefield effects simulators, etc.) is delayed or interrupted by circumstances beyond the control of the requesting unit (i.e., RMB directed check fire, ASP support, MEDEVAC, etc.) must contact RMB/TSCQ in order to arrange continued support within the scope of the contract and available assets.

FACILITIES (Number of Each)

Towers: 1
Sheds: 1
Ammo Breakdown: 1
Parking: Yes
Bleachers
Battery recharge station
Porta johns

UTILITIES AVAILABLE

Electricity: In tower
Lights: No
Water System: No

INSTALLED COMMUNICATIONS. None

MEASURED DISTANCES

	<u>MILES</u>	<u>MGRS</u>
Range Control	5.5	87406360
TBS	5.5	87106390

WTBN	6.0	87806740
ASP	7.5	91256605
EMT/Fire (Fire House 3)	6.5	89606710
Mainside Gate	9.5	94406440
Camp Upshur	11.5	80007850
Nearest MEDEVAC LZ	0.1	81526562 (LZ LOON)

DIRECTIONS TO MEDEVAC LZ: LZ Loon is located on Range 5 itself.

APPLICABLE MAP SHEET. All grid coordinates listed in this order apply to the Quantico Military Installation Map V834S Edition 4-NGA 1:25000

AREA SUITABILITY

<u>Unit Type</u>	<u>Unit Size</u>	<u>Number of Units</u>
Combat Arms	Platoon	1

GEOGRAPHICAL DATA

Access Routes: Road entrance from Routes 610 and 644
 Soil Type: Dirt/Gravel
 Terrain Type: Level
 Vegetation: Grass

COMMUNICATION REQUIREMENTS:

1. A radio check is required immediately upon occupying any portion of the RTA, every 30 minutes in a live fire status and every 3 hours in a non-live fire status.
2. The Range Control Facility (RCF) Fire Desk Net Control call sign is "Range Control". Your call sign is "Range XX" (name of range, training area or facility unit is occupying).
3. The primary RCF Fire Desk Net Control frequencies are: ELMR talk group "RC Safety" (ground) and 323.7 AM UHF (air).
4. The secondary RCF Fire Desk Net Control is telephone, numbers: 703-784-5321 or 5322.
5. OIC/RSO will monitor the RCF primary and secondary Safety Nets at all times. Instant communication is required.
6. Any unit with organic ELMR radios will have their ELMR radios programmed with the "RC Safety" talk group and use those radios as their primary means of communication within the RTA.
7. Units without organic ELMR assets will be issued ELMR radios from RMB upon check-in.
8. Approved Non-ELMR radios are only authorized for internal communication (ground).

9. If the RCF cannot reach a unit within the RTA via primary communication, the unit will be contacted via the secondary means of communication.

10. Upon loss of primary communication the OIC/RSO will initiate a "check fire"/cease training status and will contact the RCF via secondary communication. This communication will be maintained while primary communication is being restored. Units may only resume firing/training once primary communication has been re-established and clearance is granted by the RCF.

INJURY CLASSIFICATIONS:

Injuries are classified into the following categories in order to aid in casualty evacuation from the RTA.

1. ROUTINE. Routine injuries are those injuries that are not threatening to life, limb or eyesight; and conditions or illnesses treatable by medication or procedures available at the base medical facilities.

2. PRIORITY. Priority injuries are those injuries that require immediate medical attention but are not threatening to life, limb, or eyesight if treated promptly.

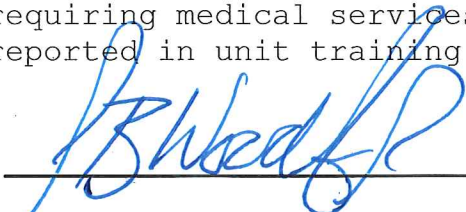
3. URGENT. Urgent injuries are severe injuries that are threatening to life, limb, or eyesight and require immediate medical attention.

4. MASS CASUALTY. A mass casualty is a series of injuries with multiple priority and urgent medical patients.

MEDICAL EVACUATION (MEDEVAC) PROCEDURES:

1. Injury occurs.
2. Range immediately cease-fires.
3. Medical support evaluates/treats injured personnel.
4. Range OIC/RSO notifies the RCF of the injury, is the victim conscious/unconscious and what type of MEDEVAC transportation is requested (ground/air).
5. The OIC/RSO must maintain constant radio contact with Range Control and awaits further instructions.

*Minor injuries and illnesses not requiring medical services need not be reported to the RCF but should be reported in unit training logs.



Range Control Officer

Date: 15 Apr 2020